

Aero Admin (Remote Support Software Guide)

IT To Go – Computer Services

THIS GUIDE IS BEST FOLLOWED USING GOOGLE CROME AS YOUR BROWSER ☺

Download Chrome by [clicking here](#) if you don't already have it installed.

PLEASE NOTE – Help images are provided, and the areas of interest or to click are highlighted in red.

1. Look for your Google Chrome or your browser of choice once you have the icon on the desktop or start menu you can double click to load the browser.



IT To Go - Computer Services

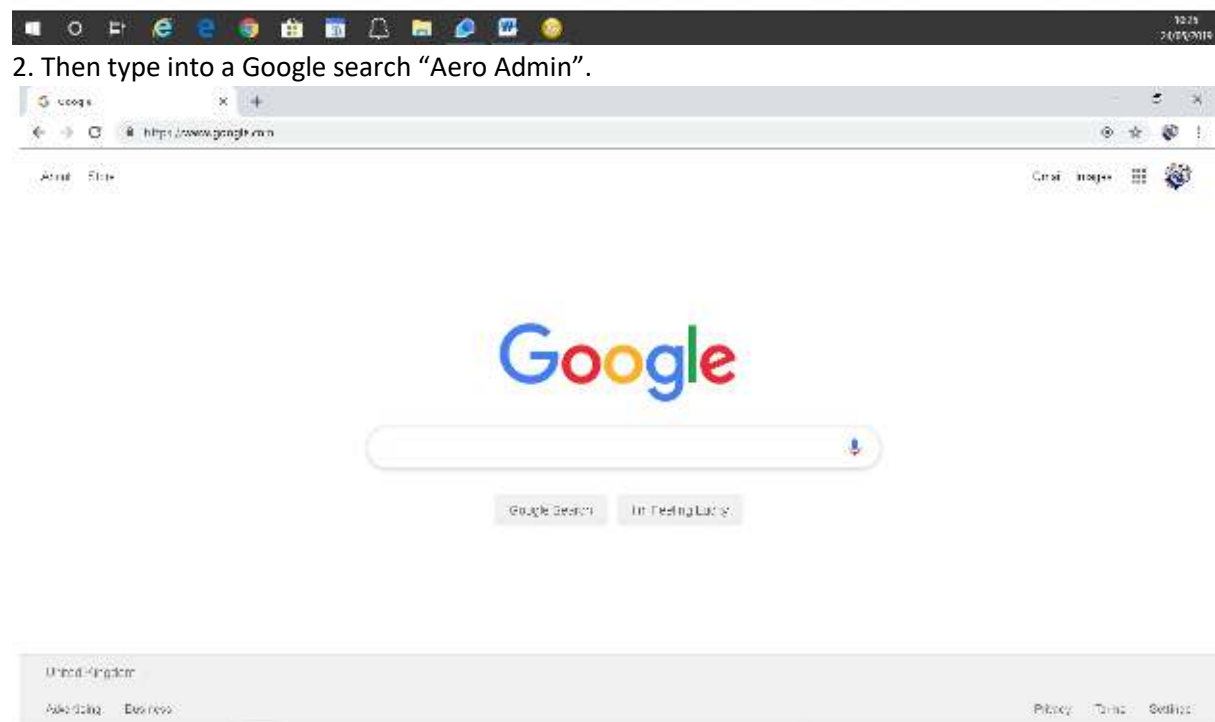


Address: Unit 7
Bootham Lane Ind Est
Dunscroft
Doncaster
DN7 4JU

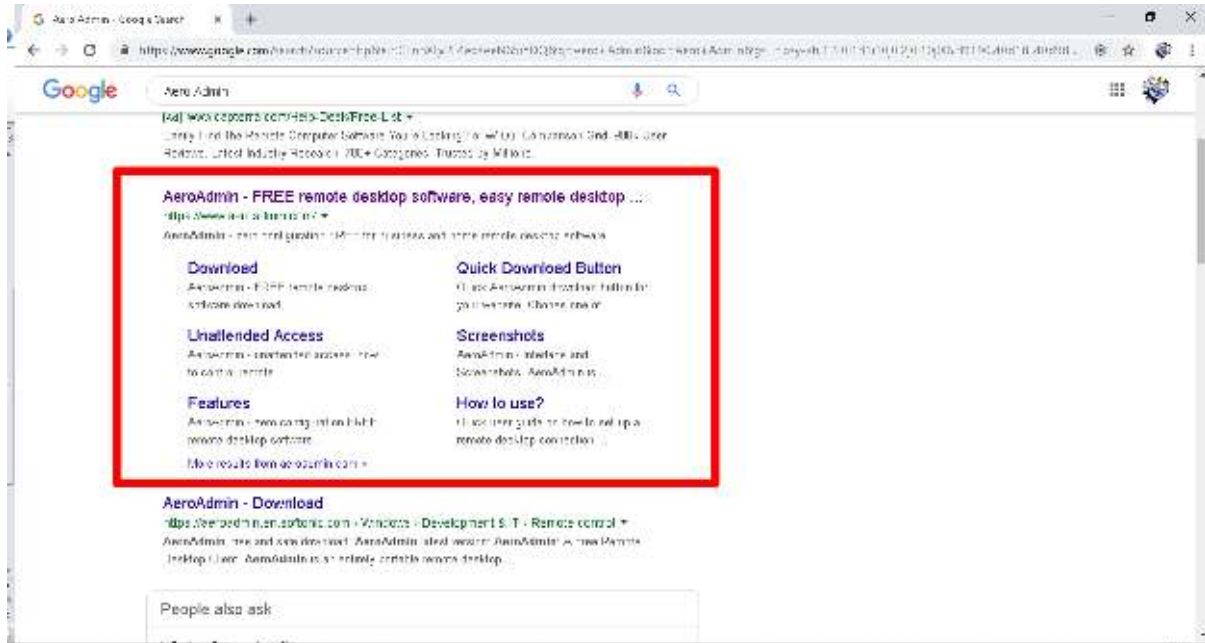
Call: 01302 352352

Email: sales@ittogo.co.uk

Website: www.ittogo.co.uk
Online Store: www.shopittogo.co.uk

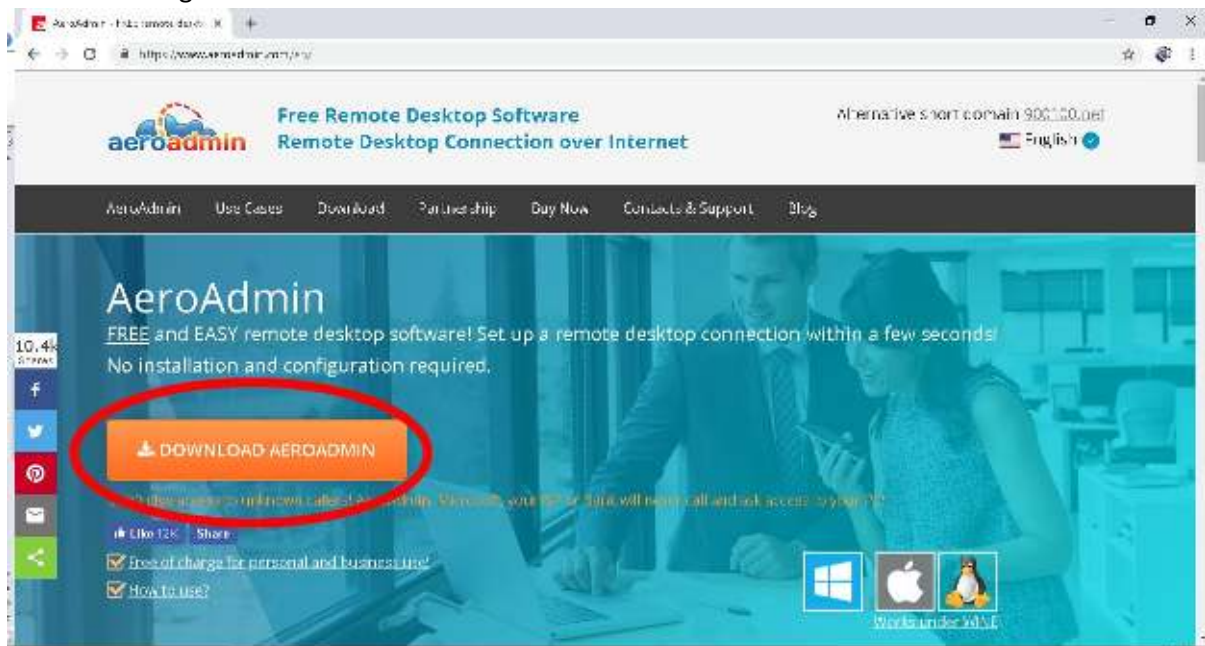


3. You are now looking for the search like below:

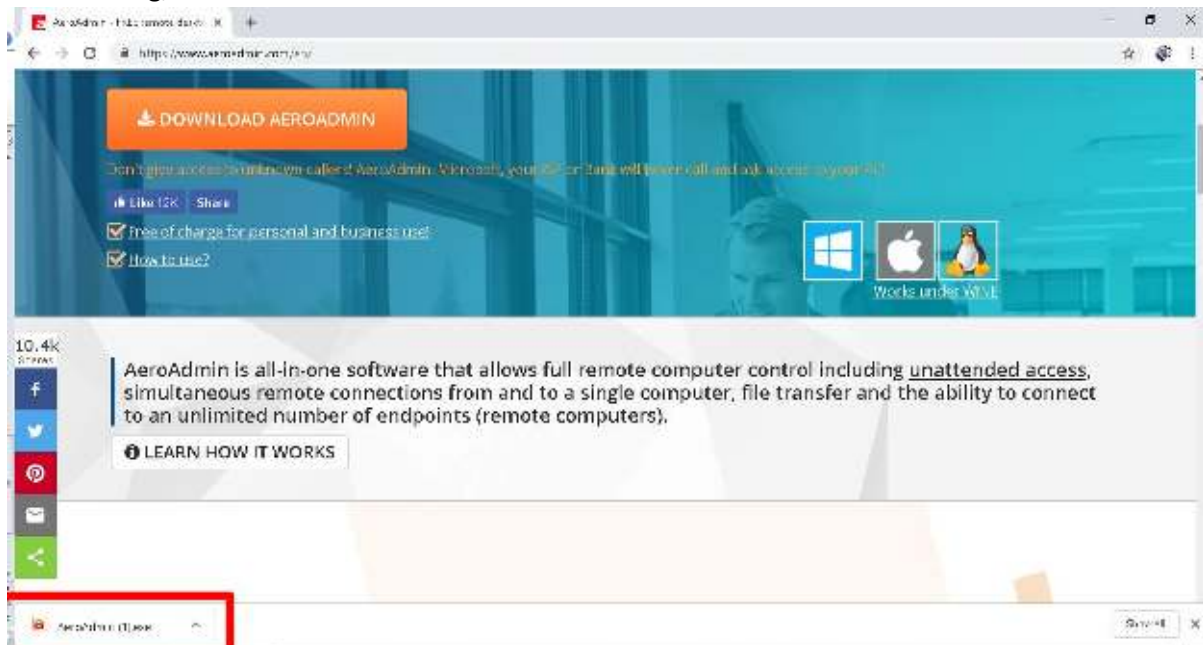


4. Click the top option “AeroAdmin – FREE remote desktop software and remote desktop” .

5. You will now be sent to the remote website where you can click the “Download AeroAdmin” button in orange.

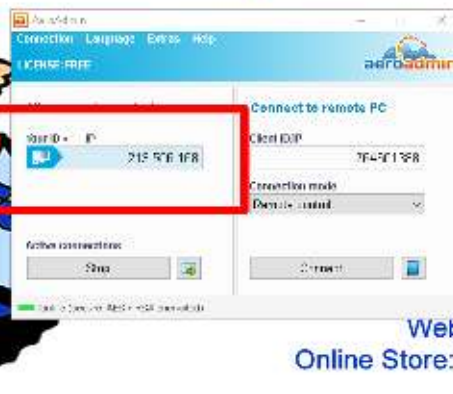


6. The program will now load in the lower left corner please wait until the icon no longer says downloading, and then click.



7. This will then open the software.

IT To Go - Computer Services



Address: Unit 7
Bootham Lane Ind Est
Dunscroft
Doncaster
DN7 4JU

Call: 01302 352352

Email: sales@ittogo.co.uk

Website: www.ittogo.co.uk

Online Store: www.shopittogo.co.uk



8. You are now ready to call support and quote the "Your ID" in the allow remote control box of the software this will then allow us to see your screen.

9. Sit back and relax while we do all the work now!